

TELEDOM EDUCATION: INNOVATION AND GROWTH IN AN ORGANISATION

“Efficient and targeted oriented learning”

Innovation is the process of bringing products, processes, services, ideas and technologies to market. All organisations whether profit or not for profit, private or public sector, need to improve their performance to maintain their competitive advantage. The purpose of this learning is to enable learners to understand the innovation process in organizations and the role of innovation in organizational development and growth, to recognize innovative ideas, to develop innovative business cases, innovative ideas and change management for innovation and growth, to implement innovations and to manage people for innovation. If you are going to be successful in the area of innovation and growth, you will need to go through an intensive programme run by experts in innovation and growth first. If you graduate having completed the Pearson BTEC in Innovation and Growth you will be able to act as an innovator or innovation manager in any organization, and most importantly, you will have the prerequisites to become a successful manager at middle and senior level.

In cooperation with **PEARSON Education** a global provider in further education, the TeleDom Conference and Education Centre opens the "**TELEDOM EDUCATION**" centre. The school will operate under the quality control and certification of BTEC Pearson for Level 4 HNC Diploma in Hospitality Management and Pearson Level 5 HND Diploma in **Hospitality Management** as well as for Pearson BTEC Diploma in **Innovation for Growth**. The **TeleDom** Conference and Education Centre - created 10 years ago by Novitech Partner Ltd, which provides educational, training and eLearning activities has been **approved as a BTEC Centre**. The TeleDom Education Centre is also accredited by the Ministry of Education of the Slovak Republic for courses in management e.g. Project Management, Process Management, Education for small and medium size enterprises, Special managerial courses.



TeleDom Education centre (Slovakia)



PEARSON Worldwide Education Network

PEARSON (www.pearson.com) is the world's leading education provider, which will help you to make a career at the management level in the hospitality industry or to start a business for yourself.

BTEC (www.edexcel.com/BTEC) is the world's most successful and best-loved applied learning brand, and has been engaging learners in practical, interpersonal and thinking skills for over 30 years. Offering academic, vocational qualification to professional certification, educating millions of people worldwide - more than any other private enterprise. Your qualifications will be accepted in the industry and recognised internationally by over 200 universities.

TeleDom and BTEC offer:

BTEC Level 5 Diploma in Innovation and Growth (QCF)

A BTEC Level 5 Diploma in Innovation and Growth (QCF) is considered as equivalent to 1 year of studies (e.g. of year 2) or a postgraduate programme or a Lifelong learning programme. After completing this course you will be able to pursue both supervisory and junior management positions in the dynamic innovation industry.

Edexcel/BTEC specification: <http://www.edexcel.com/quals/Professional/innovation-growth-lv5>

TeleDom BTEC First-time visitors site: www.teledomschool.eu

Typical job careers: Innovation Project Manager, Business Process Innovation Analyst, Quality Manager, Customer Relationship Manager

Your Study Targets

**Employment career
Manager in private or
public sector, ...
Your own innovative
business**

**Pearson BTEC Diploma
in Innovation and
Growth**

The TeleDom Education centre will award the best students with: discounted tuition fee or even paid for additional RWE (real work environment) activities. The most outstanding students will study free!!!

**Real Work
Environment
Study**

RWE Assignments:
delivering tasks in real work environment (RWE) in TeleDom Innovation centre

Task Assessments: task delivery quality and relevance to RWE e.g. development of innovative ideas and business cases, managing people for innovation and growth, implementation of innovation ideas in pilot enterprises, etc.

Support: TeleDom managerial staff guiding you in completion of your assignment task.

Your physical presence in the RWE is required

**On-line
Study**

On-line Assignments:
learning Unit tasks which can be delivered remotely (via Internet).

Task Assessment: The unit teacher (assessor) will evaluate your results (assignment deliverable) submitted to the learning portal

Support: resources, assignment specifications, assignment management portal

Guidance by the Teacher of the learning unit

**Your
Self-study**

Self study: You study the selected learning unit(s) at your pace. You study resources relevant to the learning unit you have started (opened). You can have up to 3 learning units opened.

Web meetings: Twice a week you can join a web meeting moderated by the instructor of the learning unit.

You collect and apply knowledge to deliver your assignments in high quality (Pass, Merit, Distinction)

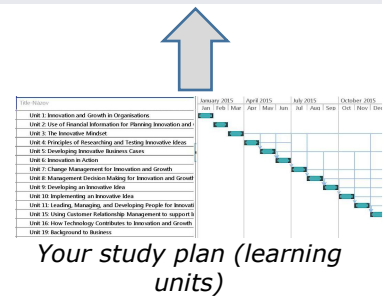
Support: resources, assignment specifications for each learning unit, eLearning portal

You can update your study plan any time

**Start your
study**

Registration: continuous admission. You can register for your study (the first learning unit) at any time by submitting the Application form. You pay a monthly tuition fee. You can suspend your study. First month tuition is free.

Study Plan: Based on your study target (Diploma in Innovation and Growth) the Course manager will develop a study plan (sequence of learning units). You can select optional learning units and intensive or a standard plan.



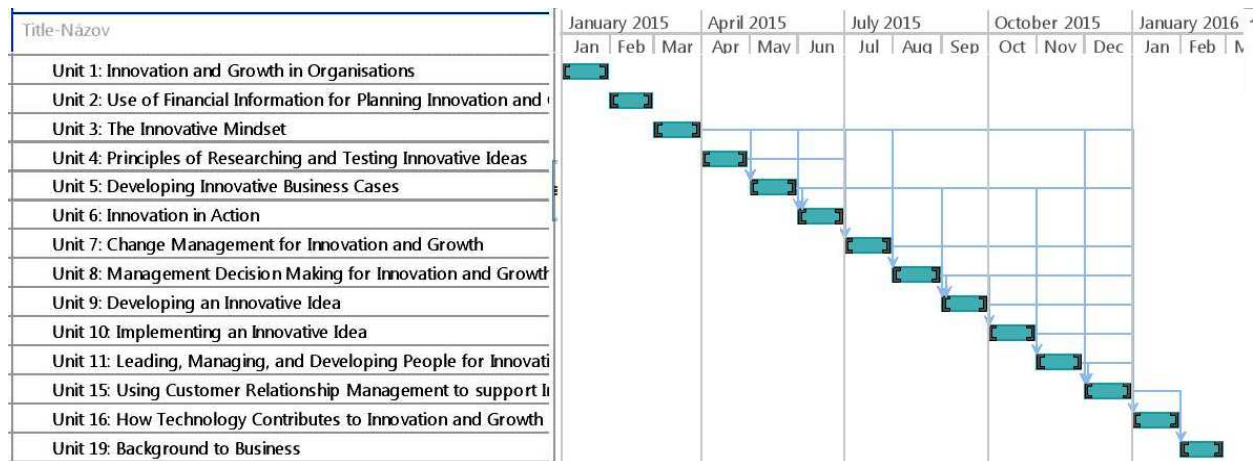
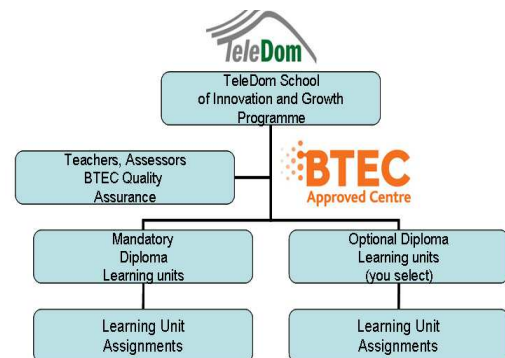


Figure 1. Study plan example of Diploma study (120 Credits)

PROGRAMME STRUCTURE

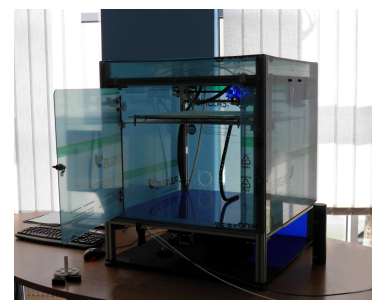
The BTEC Diploma study programme is composed from 19 learning units to be completed in a period of 12 months of intensive study.

The theoretical self-study will be complemented and assessed also by real **innovation project experience** of the learner. Project scope assigned by TeleDom school or can be selected by the learner from his/her preferred business domain.



Learning Environment: The programme will utilize various online and face-to-face teaching and learning strategies, including:

- Lectures and presentations to deliver taught content and materials
- Seminars and workshops to encourage classroom participation and self-study
- Students are required to undertake set reading on certain topics and explore relevant literature for assignments and class discussions.



**TeleDom Innovation centre
3D Printer**

Assessment: The assessment strategy takes into account the different roles of each individual unit of the programme. The assessment strategy employs a range of methods such as individual programme work (essays, reports, literature review), group projects (Innovation projects achievements, reports, presentations, case studies). The range of assessment is designed to reflect the learning outcome of each unit.

This programme offers the following opportunities:

- Undertake the study of organisations, their management and the changing environment in which they operate
- Provide students with a programme offering a balance of theory and practical skills which will facilitate their intellectual and professional development
- Equip students with the necessary knowledge and skills (including thinking skills and general skills)
- Apply practically processes in a real environment.



Tuition fee and learning incentives

1. The standard tuition fee is 200€ for each month starting from registration until completing the unit (Diploma in Innovation and Growth). First month tuition is free. The fee includes:
 - a. Access to learning resources and Course portal
 - b. Participation in web meetings with the teachers (min. twice a week for 2 hours)
 - c. Accommodation at TeleDom hotel for the units when practical assignments require real working environment
 - d. BTEC Certificate of completion after each unit passed on learner request
2. Discounts from the tuition fee: Working as a consultant or trainee at the TeleDom Centre (Hourly rate 15-20 € depending on the nature of the work performed by the student).



Examples: Providing consulting and/or training services during Innovation and Growth learning, designing updates for learning units, providing assistance at related workshops, etc. The main motivation goal for both students and the TeleDom centre:

- Intensive study – means lower total cost of course for the student
- Intensive participation in development of innovation business cases and workshops – reduction of the monthly tuition fee
- Best students will be offered employment status at TeleDom Centre or in the companies of Novitech Company Group operating across the EU.

Contacts for the programme:



Dr. Attila Tóth
Director,
TeleDom Business school



Dr. Ján Sabol
Programme Leader



Štefánia Olahová
BTEC Admin Manager

Email: info@teledomschool.eu, web: www.teledomschool.eu

Postal address: TeleDom Education Centre, Timonova Street 27, 040 01 Kosice, Slovak Republic
Phones, Košice: Phone: +421 553274400, Brussels: +32 497482111, Luxembourg: +352 691554719